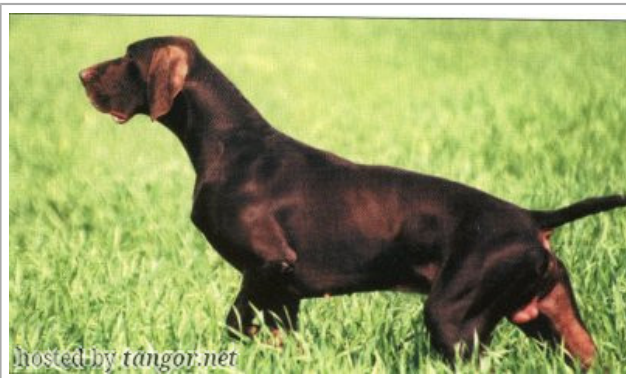








OSCAR II DE MALINNJOR D'ELISA

(M) LOF 80382/15231
 Color: Mar. / Qualifications: CHAMPION -CHA / Dyspl.: A
Kennel

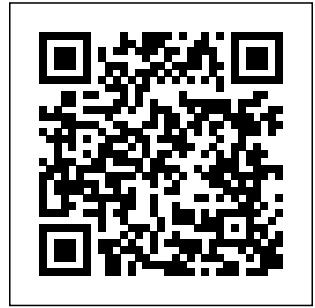


	<p><u>MAJOR DE L'ILE SAINT PIASTRE</u> (M) LOF 29831</p>	<p><u>A.JAKS Z JIVOVE HORY</u> (M) LOF 26106/3589 (TR.CHIB en 1976)</p> 	<p><u>OGAR Z PREDMOSTI</u> (M) 34517</p>
<p>Father <u>CYGFRIED II DU GUE VASLIN</u> (M) LOF 56697/10480 - Mar.</p>	<p><u>VENUS DU GUE VASLIN</u> (F) LOF 90284/19276 - Mar. Pan.Bla.</p>	<p><u>GAYA Z HLIZOVA</u> (F) LOF 27194</p>	<p><u>ARNA Z OHROZINSKEHO</u> (F) 35865</p>
		<p><u>MAGIC DE BAYARA LOE. 0783294</u> (M) LOF 77742/14054 - Mar.</p> 	<p><u>CORAIL DU BOIS MANGER</u> (M) LOF 57230/10581 (CHAMPION -CHCPS -CHIB -CHQC -CHCS -CHP -TR CHAMPION -CHES.B) - Mar.</p>
		<p><u>RAFALE</u> (F) LOF 83334/17605 (CHAMPION -TR) - Mar. Pan.Bla.</p>	<p><u>LUX ZE ZITKOVEHO RYBNIKA</u> (M) LOF LIVRE (CHAMPION -IB CHAMPION -RO.B) - Mar.</p>
			<p><u>HORUS DE LA BRUYERE DES GATINES</u> (M) LOF 68993/12673 - Mar.</p>
			<p><u>MIRIS DU GUE VASLIN</u> (F) LOF 75165/15852 - Mar. Pan.Bla.</p>

	<p><u>DEMON DE LA PORTE DE BECRAY</u> (M) LOF 60546/11048 (CHAMPION -CHCS -CHIB -CHP -CHA -TR CHAMPION -CHDE.B) - Mar.</p> 	<p><u>SAPHIR DU MARAIS DE SAINTONGE</u> (M) (CHCPS -CHIB -CHQFS -CHCPC -TR -CHCSCHLU.B) - Mar.</p> 	<p><u>ARAN Z PODEBRADSKÉ ROVINY</u> (M) LOF 30562/04550 (CHAMPION -TR)</p>
<p>Mother <u>MORGANE DE LA VALLÉE DU HOUX</u> (F) LOF 75648/15960 - Mar.</p>	<p><u>DYNA DES MONTS DE SERVELAURE</u> (F) LOF 60599/12431 (CHAMPION -CHIB -CHP -CHA -TR) - Mar. Pan.Bla.TLé.Tru.</p> 	<p><u>TINA DE LA PORTE DE BECRAY</u> 1982-05-10 (F) LOF 45270 (CHCS -CHIB -CHQFS -CHCPS -CHCPC -TRCHLU.B) - MAR.PAN.BLA.TFT</p> 	<p><u>ODE DU COSTENSIS</u> (F) LOF 34337/06515 (CHAMPION -TR) - Mar.</p> 
		<p><u>AS</u> (M) LOF 51603/09269 (CHAMPION -CHIB) - Mar. Pan.Bla.TLé.Tru.</p>	<p><u>LIRO DU FOND DES BROCHES</u> (M) LOF 25051/04473 (CHAMPION -CH.T. -CHITF -CHGT)</p> 
		<p><u>ATIA</u> (F) LOF 51701/09944 (CHAMPION -CHCS -CHIB -TR) - MAR.PAN.BLA.TLT</p>	<p><u>MAIKA DU CLOS DE ROSEN</u> (F) LOF 30065/04765 - Mar. Pan.Bla.TLé.Tru.</p>
			<p><u>RAC DU RIOU DE LA CUVE</u> (M) LOF (CHCS)</p>
			<p><u>ODE DU RIOU DE LA CUVE</u> (F) LOF</p>
			<p><u>UBU DU CLOS DE LA GELINOTTE</u> (M) LOF 47602</p>
			<p><u>REINA DU GUTTENBOURG</u> (F) LOF</p>

080382/15231
ELITE B
ELITE A
Cot.6 Elite A
HD-A BH-11
BH-11 HD-A
EJB-11 HD-A
JEB-1.1 HD-A

Italian breeding (estimated): 0%



Note: data are entered by members. There is no guarantee about accuracy of data.